

FOR SALE | PONCE CITY MARKET

777+/- SF Ground Floor Loft Office /Live/Work/ Retail Space



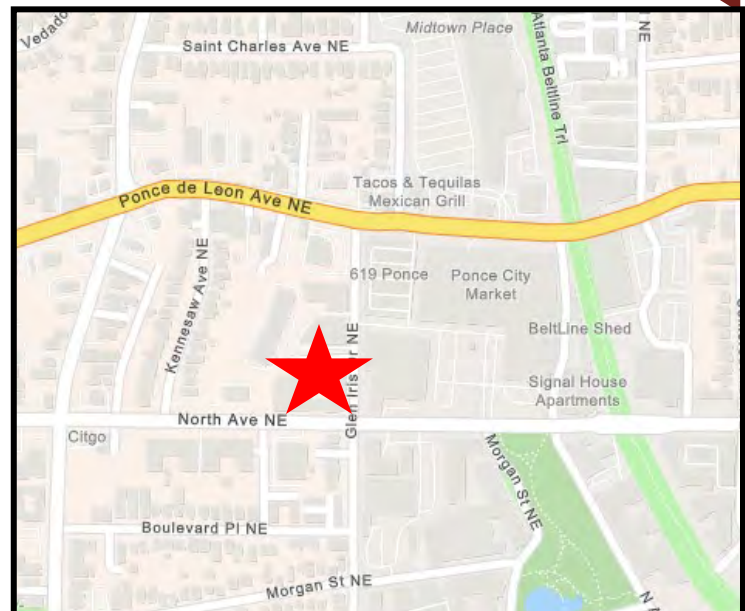
Ponce Springs

620 Glen Iris Drive NE
Unit 108
Atlanta, GA 30308

Price: \$351,000.00

Size: 777+/- SF

- Across the Street from Ponce City Market
- Walking Distance to Old Fourth Ward Park and The Beltline, Eastside Trail
- 1 Reserved Parking Space in Parking Deck and Free Guest Parking is Available in surface Lot and Ground Floor of Parking Deck
- Access to Building Amenities Which Include a Gym, Business Center, Courtyard, Pool



Alan Joel

404.210.1700

ajoe@alanjoelpartners.com

For complete details, please visit: www.alanjoelpartners.com



455 East Paces Ferry, Suite 312
Atlanta, GA 30305

The information was obtained from sources we assume are reliable. We do not doubt its accuracy, however we do not guarantee it. No liability is assumed for errors and omissions. Information is subject to changes and withdrawal without notice.

Ponce Springs

620 Glen Iris Drive NE, Unit 108, Atlanta, GA 30308

Property Summary

Unleash your business potential in this stunning 777 SF ground floor loft space, perfectly situated across from the vibrant Ponce City Market in Atlanta!

Enjoy the convenience of dedicated parking space with additional guest parking available on the deck. Experience the vibrant community, authentic restaurants, and eclectic shops of Ponce City Market, a historic landmark that has become a hub for food lovers and culture seekers alike. Plus, take advantage of outstanding amenities including fitness center, pool, business center, and a captivating rooftop terrace offering breathtaking views. Elevate your business in this prime location today!



ANNUAL EXPENSES

HOA	\$3,360
City of Atlanta Property Taxes	\$1,188
Fulton County Property Taxes	\$4,067



Alan Joel

404.210.1700

ajoe@alanjoelpartners.com

For complete details, please visit: www.alanjoelpartners.com

ALAN JOEL PARTNERS

Commercial Real Estate Brokerage & Investment

The information was obtained from sources we assume are reliable. We do not doubt its accuracy, however we do not guarantee it. No liability is assumed for errors and omissions. Information is subject to changes and withdrawal without notice.

Ponce Springs

620 Glen Iris Drive NE, Unit 108, Atlanta, GA 30308

Business Key Facts

620 Glen Iris Dr NE, Atlanta, Georgia, 30308 | Rings: 1, 3, 5 mile radii

This infographic features record-level business information. It is best suited for smaller area analysis such as census tracts, neighborhoods, and smaller zip codes.



Key Statistics

1,759

Total Businesses

26.0K

Total Employees

\$4.85B

Total Sales

3.2%

Unemployment Rate

Daytime Population



36,092

Total Population



44,268

Total Daytime Population

Ratio of daytime to total population:

1.23

Values > 1.0 mean that more people come to the area during the day than live there.



Urban Core

Dominant Urbanicity Type



15.7

Avg Number of Employees



560.4 ↑

Total Business Per Sq Mi
This is 451.3% higher than Fulton County

Top 25 Largest Businesses in Area



25*

100 or More Employees



25*

\$10M+ Annual Sales Vol

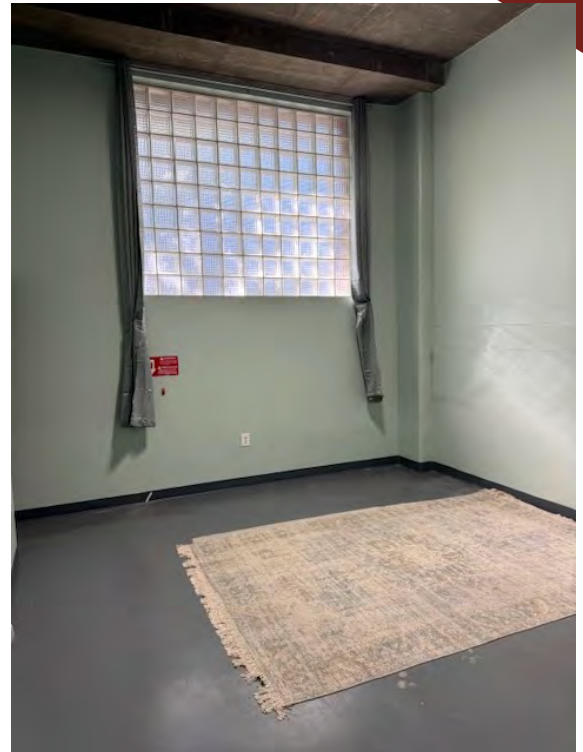


Highest sales volume

Business Name	Type	Sales Volume
Delta Air Lines Inc	Branch	\$56.8B

Most Employees

Business Name	Type	Employees
Delta Air Lines Inc	Branch	80.0K



Alan Joel

404.210.1700

aj Joel@alanjoelpartners.com

For complete details, please visit: www.alanjoelpartners.com

ALAN JOEL PARTNERS
Commercial Real Estate Brokerage & Investment

The information was obtained from sources we assume are reliable. We do not doubt its accuracy, however we do not guarantee it. No liability is assumed for errors and omissions. Information is subject to changes and withdrawal without notice.